



Alameda Unified School District

Alameda, CA

LOCATION:

- Population: 78,900
- Located 30 Minutes East of San Francisco
- Weather:
Summer/Fall: Warm and Dry
Winter/Spring: Cool and Humid

ELIGIBILITY:

- Enrollment Restrictions: None
- Minimum SLEP: 50
- Minimum TOEFL: Not Required
- Minimum ELTIS: 215

DISTRICT PROFILE

Alameda Unified School District offers its diverse student body a rigorous curriculum with 12 Advanced Placement courses in a variety of subjects. Some of the district's notable alumni include rock legend Jim Morrison of The Doors, the MLB's 2003 National League Rookie of the Year and World Series Champion Dontrelle Willis of the Detroit Tigers, and many other professional athletes.

FACILITIES

Alameda Unified School District offers many outstanding facilities such as a swimming pool, auditoriums, sports fields, and media centers.

SPORTS AND ARTS

Alameda has a very competitive athletic program with many graduates going on to play professional baseball. Students have had the opportunity to compete in 8 conference titles as well as take home many 2nd and 3rd place titles.

Schools in the district offer rich dramatic arts programs and visual and multimedia arts as well as various musical programs.

AWARDS AND ACCOMPLISHMENTS

Both of the Alameda Unified School District's public high schools have been recognized by US News and World Report as two of the top high schools in the country.

COMMUNITY INFORMATION

Located across the bay from San Francisco, Alameda is a quiet community set on an easily accessible island adjacent to the vibrant city of Oakland. The Bay Area, as it's best known, is one of the most wealthy, ethnically diverse, technologically advanced, politically progressive, and naturally beautiful regions in the US.

Partial List of University Acceptances: Berklee College of Music, California State University, Emerson University, Fashion Institute of Design and Merchandise, Massachusetts Institute of Technology (MIT), Morehouse College, New York University, Princeton University, Spelman College, Stanford University, US Military Academies, University of California, University of Chicago

SCHOOL HIGHLIGHTS:

- Both high schools have been recognized as top schools by US News and World Report
- Close to the beach and only 20 minutes from San Francisco
- Famous alumni like Jim Morrison and Dontrelle Willis

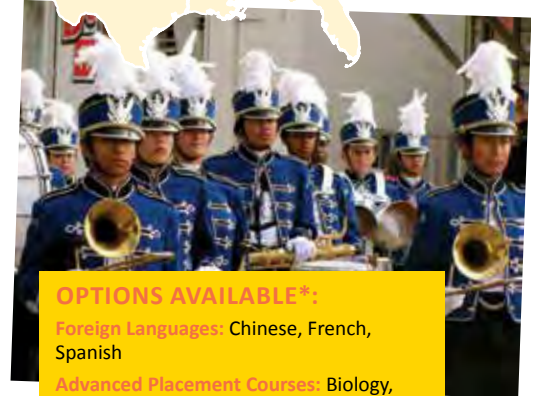
ACADEMICS AND FACTS:

- Grades at School: 9-12
- Total Students Per School: About 1,763
- Teacher/Student Ratio: 1:22
- Diploma Year Offered: YES
- Choose High School in District? NO
- High Schools Accepting Students: 2



ALAMEDA UNIFIED SCHOOL DISTRICT

SAN FRANCISCO
Closest Airport: OAK/SFO



OPTIONS AVAILABLE*:

Foreign Languages: Chinese, French, Spanish

Advanced Placement Courses: Biology, Calculus AB, Calculus BC, Chemistry, Computer Science, Economics, English Language and Composition, English Literature and Composition, Environmental Science, European History, French Language and Culture, Spanish Language and Composition, Statistics, Studio Art, US Government, US History, World History

Arts: Advanced Multimedia Art, Beginning Guitar, Cable Television/Media Operations, Concert Band, Contemporary Ensemble, Dance, Drama, Jazz Band, Multimedia Art, Symphonic Band, Theater Technology, Visual

Athletics**:

Boys:

Fall: Football, Cross Country, Water Polo
Winter: Basketball, Soccer

Spring: Badminton, Baseball, Golf, Swimming, Tennis, Track, Volleyball

Girls:

Fall: Cheerleading, Cross Country, Golf, Tennis, Volleyball, Water Polo

Winter: Basketball, Soccer

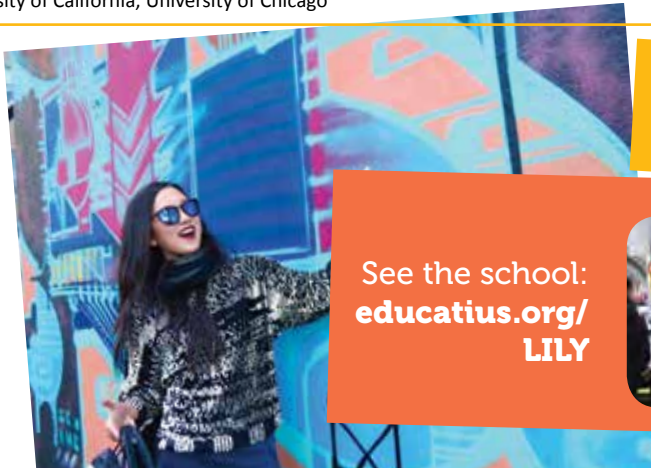
Spring: Badminton, Softball, Swimming, Track

Extracurricular Activities: Dance Groups, Interact Club, JROTC, Music Ensembles, National Honor Society, Red Cross Club, School Flags

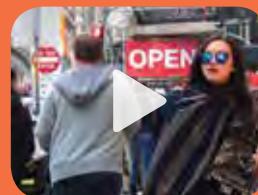
ESL Available/Level: YES

*All courses and options offered by the school are subject to change.

**State regulations may restrict sports in isolated cases



See the school:
educatius.org/LILY



VIDEO HIGHLIGHT

This school has it all, strong academics, great sports, lots of clubs, and super support for international students all in a great area close to San Francisco. – Kara Castro, Regional Manager