



BOARDING



GIRLS



NEW ENGLAND



FOUR SEASONS



ARTS



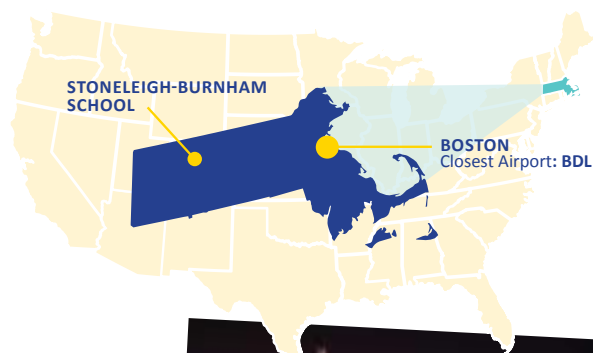
IB PROGRAM



SPORTS

Stoneleigh-Burnham School

Greenfield, MA



LOCATION:

- Population: 17,500
- Located 2 Hours West of Boston
- Weather:
Summer/Fall: Warm and Humid
Winter/Spring: Cool and Dry

ELIGIBILITY:

- Enrollment Restrictions: None
- Minimum TOEFL: 70
- Minimum TOEFL Jr: 800
- Minimum ELTIS: Not Accepted

SCHOOL HIGHLIGHTS:

- Intensive dance and equestrian programs
- Cultural orientation program
- International Baccalaureate Diploma

SCHOOL FACTS:

- Grades at School: 7-12, PG
- Total Students in School: 150
- Students in High School: 108
- Teacher/Student Ratio: 1:5
- School Uniform Required: NO
- Religious Affiliation: None

SCHOOL PROFILE

Founded in 1869, Stoneleigh-Burnham School is situated on 100 acres in the heart of the New England countryside. The nationally recognized school is New England's only girls' school to offer the prestigious International Baccalaureate Diploma.

FACILITIES

Stoneleigh-Burnham School's internet-accessible facilities include a new science center, dance studios, athletic facilities, and an art gallery. The school's recently renovated and expanded equestrian center features indoor and outdoor riding rings for year round riding, heated barns, an indoor heated viewing room, an extensive trail network around the 100-acre campus, and a Derby Field.

SPORTS AND ARTS

Students can take advantage of the school's New England location by participating in its competitive alpine skiing or figure skating winter teams. The school's equestrian program is partnered with Smith College, giving students access to collegiate quality instruction and facilities.

Stoneleigh-Burnham offers unique art courses such as octet and weaving. The school's prestigious dance program offers instruction to students of all levels as well as a selective group that travels to New York City each spring and to various festivals and concerts throughout the year.

AWARDS AND ACCOMPLISHMENTS

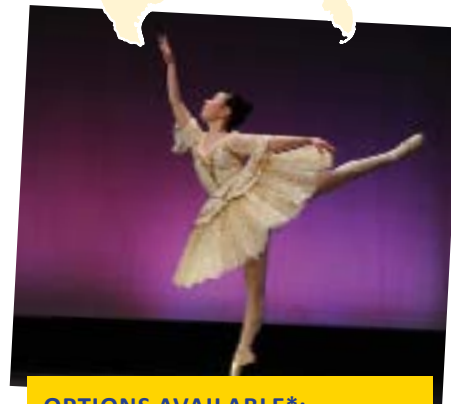
Stoneleigh-Burnham is the only secondary school in the US to offer the British Horse Society Certification and is a four-time national equestrian champion. Thirteen students have ranked as World Competitors in Debate and Public Speaking.

DORMITORIES AND STUDENT LIFE

Students are housed in single or double dorm rooms in the school's main building. Students spend weekends participating in activities such as trips to Boston, New York City, ski resorts, and more.

University Acceptance Rate: 100%

Partial List of University Acceptances: Boston University, Connecticut College, Cornell University, George Washington University, Hong Kong University, Massachusetts Institute of Technology (MIT), New York University, Princeton University, John Hopkins University, Worcester Polytechnic Institute



OPTIONS AVAILABLE*:

Foreign Languages: Chinese, French, Spanish

Advanced Placement Courses: Offers IB Courses in place of AP Courses.

Arts: Acting, Dance (Beginning/Intermediate), Big Band, Chorus, Octet, Ceramics, Chamber Music Ensemble, Dance Performance Project, Design and Color, Desktop Publishing, Digital Photography, Graphic Design with Photoshop, Jazz Combo, IB Art, IB Dance, IB Music, Introduction to Studio Arts, Pointe Dance, Rock Band, Winter Play Production, Weaving, World Music

Athletics:

Girls:

Fall: Cross Country, Dance, Equestrian, Soccer, Volleyball

Winter: Alpine Skiing, Basketball, Dance, Equestrian, Figure Skating

Spring: Dance, Equestrian, Lacrosse, Softball, Tennis

Extracurricular Activities: Blue Key Society, Business Club, Community Service Club, Debate and Public Speaking Society, Gay/Straight Alliance, International Club, Literary Society, Multimedia Club, Photography, Student Alumnae Association, Students of Color

ESL Available/Level: YES - Intermediate and Advanced

*All courses and options offered by the school are subject to change.

